

# WHAT'S NEW IN CMM-Manager - 3.6 SP1

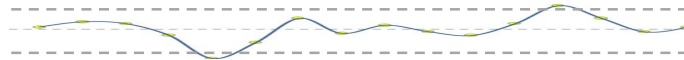


February 27, 2017

Nikon Metrology, Inc.

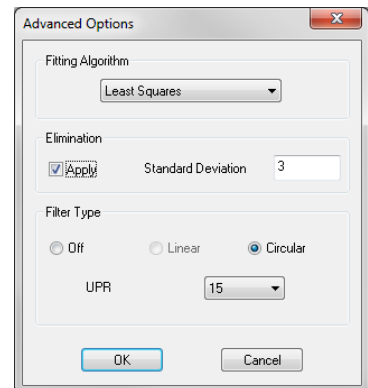
Nikon Metrology is pleased to announce the release of CMM-Manager version 3.6 SP1. This release adds the following enhancements:

- UPR / Wavelength / Statistical Feature Filtering
- iNexiv Laser Auto Focus Threshold Setting
- Save Ref Frame at Rotary Table Center-line
- All Matches Option for Pattern Recognition
- Improved Offline Vision / Image Inspection
  - Programmable Import Image
  - Auto Collect Points
- New Graphical Report Disc Display Option
- Faster Unknown Vision Edge Profiling
- TOPMES AX3 USB Counter
- New RTP20 Motion Setting
- Renishaw ACR3 Rack Load / Unload Offset



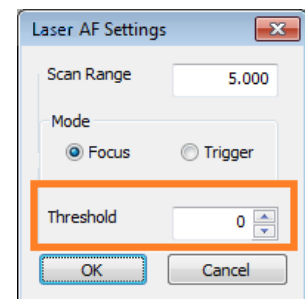
## 1. Filter for Measured and Best-Fit Construct Features

- UPR Filter for Circular Features
- Linear Filter for Lines / Planes
- Standard Deviation Elimination Filter
- Available for SP25 Measurement and Best-Fit Construction



## 2. iNexiv Laser Auto Focus Threshold Setting

- New Setting Allows Increased Laser AF Threshold
- Improved Laser AF Performance on Highly Reflective Surface

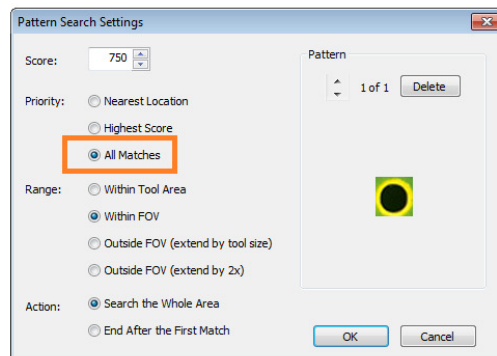
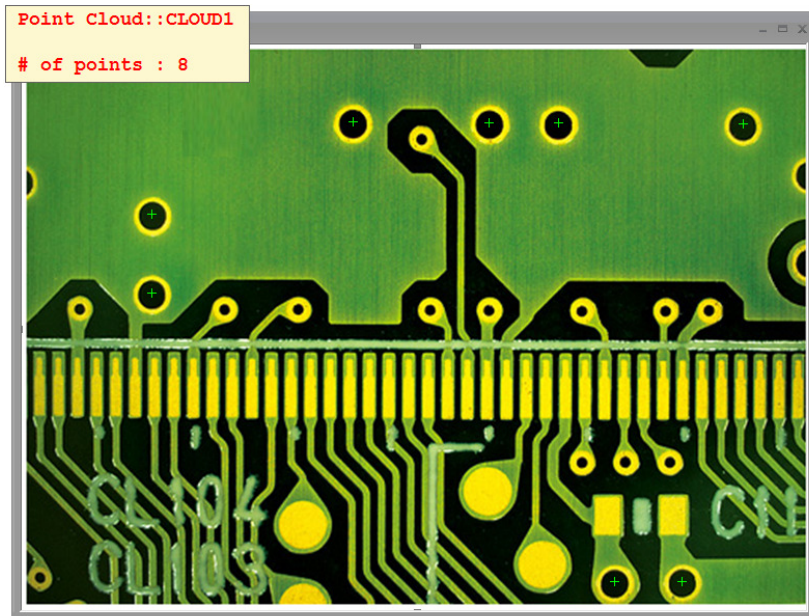


## 3. Save Ref Frame at Rotary Table Center-line

- Automatically Save Fixture Ref Frame After Calibration
- Save Time Programming Parts Held on Rotary Device

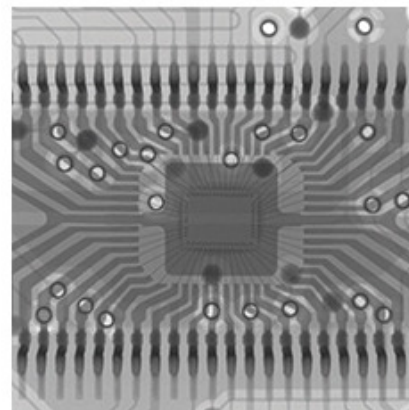
#### 4. All Matches Option for Pattern Recognition

- Search All Matching Patterns Within Field of View
  - Find and Count Features / Identify Missing Features
  - Locate Multiple Parts in Large FOV and Offline Images



#### 5. Improved Offline Vision / Image Inspection

- Programmable Import of Static Image
- Auto Collect Vision Tool
- Allows for Unattended Inspection of Images From External Source Such as:
  - 2D X-Ray Images
  - Vision Systems – Large FOV, ShuttlePix, 3<sup>rd</sup> Party



#### 6. New Graphical Report Option

- New Option to Always Display Deviation Disc
- Displays Deviation Disc Even if Behind CAD Surface

#### 7. Faster Unknown Vision Edge Profiling

- Run Mode Execution Speed Increased
- Teach Mode Retains Delay for Visualization

#### 8. TOPMES AX3 Interface

- 3 Axis Manual CMM Interface
- USB and PCI Version Available



**9. New RTP20 Lock / Unlock Motion Setting**

- New Locking Lever Offset Setting
- Prevent RTP20 Pole Over-Travel / Deflection



**10. Renishaw ACR3 Rack Load / Unload Offset**

- Additional Clearance Motion for Large Probe
- Allows Probe Change for Laser Scanner, Deva Vision Probe, etc.



**11. Language Support:**

- English, Chinese, French, German, Japanese, Polish, Spanish, Czech and Italian

**12. Bug Fixes:**

- Program Mirroring Fixes:
  - Crash Using Append Option
  - Offset Align Not Mirrored
  - Cloud Report Not Mirrored
- Prevent Crash When Using DMIS Editor
- iNexiv Bug Fixes:
  - Slot Tool Scan Direction Not Uniform
  - Light Orientation Not Updated After Rotate Transform
  - CAD Taught Point Value Not Updated After Verify
  - Multi-Point Vision AF Z Axis Value Not Correct
- I++ Interface - Eliminate Unnecessary Tip Calibration Motion / Tip Change
- Wrong Result for Circle Construction Tangent to Two Lines
- Missing Machine Setup Parameters Deva 037 Interface
- Fixed Negative (-) CAD Thickness for Cloud to CAD Report
- Inconsistent Vision Tool Location Switching Between Circle and Arc
- Program (PRG) Files Missing From Recent File List

**13. PC Requirements:**

- CPU ----- Intel i7 / AMD FX 3.0 GHz or above
- OS ----- 32 / 64 bit - Windows 7, 8, 10 (Windows 10 and 64 bit support for most CMM hardware)
- Memory ----- 8 GB or more recommended
- Hard disk ----- 500 GB or more recommended
- Graphics Card ----- 1920 x 1080 (v3.0+ includes dual monitor support)
- Monitor ----- 20" or above
- PCI Slot ----- Mini tower to accommodate full height PCI card if needed