



CMM-Manager

Nikon Metrology iSpace

Installation Guide

3.8

NIKON METROLOGY | VISION BEYOND PRECISION



Copyright Notice

Nikon Metrology" refers to "Nikon Metrology N.V. or any of its subsidiaries"

This publication or parts thereof, may not be reproduced in any form, by any method, for any purpose.

Nikon Metrology makes no warranty, expressed or implied, including but not limited to any implied warranties or merchantability or fitness for a particular purpose, regarding these materials and makes such materials available solely on an "as is" basis.

In no event shall Nikon Metrology be liable to anyone for special, collateral, incidental, or consequential damages in connection with or arising out of purchase or use of these materials. The sole and exclusive liability to Nikon Metrology, regardless of the form of action, shall not exceed the purchase price of the materials described herein.

Nikon Metrology reserves the right to revise and improve its products as it sees fit. This publication describes the state of this product at the time of publication, and may not reflect the product at all times in the future.

Copyright © 2018 Nikon Metrology. All rights reserved.

Acknowledgments

Products that are referred to in this document may be either trademarks and/or registered trademarks of the respective owners.

Our Goal

At Nikon Metrology, we are committed to providing you with the highest quality in customer service. Whether your needs are telephone troubleshooting assistance, product training or technical support, our full-time staff of experienced professionals are on-hand to provide support.

How to Reach Us

Nikon Metrology, Inc.

12701 Grand River Ave., Brighton, MI 48113

Tel.: (810) 220-4380, Fax: (810) 220-4300

E-mail: sales.nm-us@nikon.com.com

Website: <http://www.nikonmetrology.com>

Contents

| | | |
|----------|---------------------------------------|----------|
| 1 | File Locations | 1 |
| 2 | Installation Procedures | 2 |
| 3 | Install Surveyor | 2 |
| 4 | Install CMM-Manager on Host PC | 3 |
| 5 | Setup Machine | 3 |
| 5.1 | Select Machine Setup..... | 3 |
| 5.2 | Setup iSpace | 4 |
| 5.3 | Setup Machine Orientation | 5 |
| 6 | Index | 7 |

1 File Locations

An Important Note About File Locations

Beginning with CMM-Manager 3.3, Microsoft recommendations for file locations have been followed. It is important to pay very close attention to this as the majority of support calls for failed installations are due to using the incorrect file path during setup.

CMM-Manager Program Installation

This is where the executable files for CMM-Manager are stored. In general, NO USER OR CONFIGURATION FILES are stored here.

Each version of CMM-Manager will have its own unique directory to allow true parallel installation of multiple versions. CMM-Manager 3.8 would be installed in CMM-Manager 3.8, CMM-Manager 3.8 SP1 would be installed in CMM-Manager 3.8 SP1 and so forth.

32-bit operating systems

C:\Program Files (x86)\Nikon\CMM-Manager 3.8

64-bit operating systems

C:\Program Files\Nikon\CMM-Manager 3.8

CMM-Manager Configuration and User Files

Machine setup and configuration files are stored here. If setup requires files from a previous configuration to be copied, they are copied here.

As with the Program Installation, each version of CMM-Manager will have its own unique directory to allow true parallel installation of multiple versions. CMM-Manager 3.8 would be installed in CMM-Manager 3.8, CMM-Manager 3.8SP1 would be installed in CMM-Manager 3.8SP1 and so forth.

[CommonAppDataFolder]\Nikon\CMM-Manager XX\Design

[CommonAppDataFolder]\Nikon\CMM-Manager XX\Driver

[CommonAppDataFolder]\Nikon\CMM-Manager XX\Gear

[CommonAppDataFolder]\Nikon\CMM-Manager XX\Logs

[CommonAppDataFolder]\Nikon\CMM-Manager XX\Options

[CommonAppDataFolder]\Nikon\CMM-Manager XX\Projects

[CommonAppDataFolder]\Nikon\CMM-Manager XX\Resource

Please note that [CommonAppDataFolder] property resolves to different folder locations depending on your host OS:

Supported Operating Systems

- **Windows 7 SP1 Professional, Enterprise or Ultimate**
- **Windows 8.1 Pro or Enterprise**
- **Windows 10 Pro or Enterprise**

[CommonAppDataFolder] = C:\ProgramData

E.g. driver configuration files location: C:\ProgramData\Nikon\CMM-Manager XX\Driver

NOTE: By default, Windows marks "ProgramData" as a hidden directory. You may either type the path in the address bar, bypassing the hidden setting, or change the Windows files settings to display Hidden Files and Folders.

Migration

If CMM-Manager 3.3 or above is installed on a computer with an existing installation, the user will be prompted to migrate files. All configuration settings from the previous installation will be copied. This includes configuration information in the system registry as well as files on the hard drive. The original files are left as-is. Copies are made in the new locations.

Configuration (Driver) files, other Resource files, Design (CAD) files, Report files, and Program files are all copied to their respective directories in the new Configuration and User Files directory. The Reports and Programs directories are merged into a single Programs directory.

2 Installation Procedures

To setup CMM-Manager to work with a Nikon Metrology™ iSpace (iProbe), follow the installation procedure below:

1. Install Surveyor 2.0 or above on Host PC
2. Install CMM-Manager on Host PC
3. Setup Machine

3 Install Surveyor

(Skip this step if the PC is running the current software with the iSpace)

1. Make sure Surveyor 2.0 or above is installed on the Host PC and is working with the IProbe hardware.

Additional instruction for 64 bit operating systems:

In order for 64 bit CMM-Manager to connect to Surveyor you need to run an additional registration command from the command prompt. Open:

`C:\Windows\System32\cmd.exe`

Type and enter the command:

```
"C:\Windows\Microsoft.NET\Framework64\vXX\regasm "C:\Program Files  
(x86)\Nikon\Surveyor XX\Metris.Surveyor.Common.dll"
```

Replace "vXX" in the path above with whatever is the latest framework version in your "C:\Windows\Microsoft.NET\Framework64" folder (example: "v4.0.30319"). Replace "Surveyor XX" with the version number matching the Surveyor version installed on the Host PC.

Once the command is complete, the command prompt can be closed.

4 Install **CMM-Manager** on Host PC

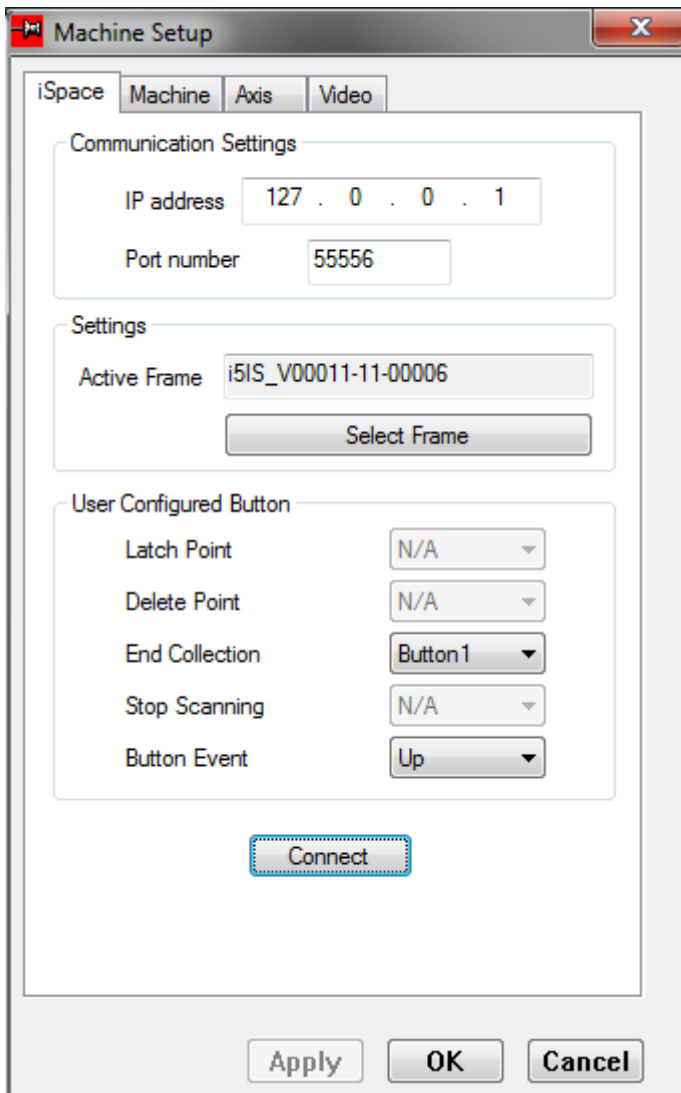
1. Insert the installation CD into the CD-ROM drive of your computer. Alternatively, download installation package from the **CMM-Manager** website and follow instructions as guided.
2. The setup program will automatically start to run. Just follow the instructions to install **CMM-Manager** onto your computer.

5 Setup Machine

5.1 Select Machine Setup

Select menu System ▶ Machine Setup.... The machine setup password dialog box will be displayed. Type password "service" and the Machine Setup dialog pops up.

5.2 Setup iSpace



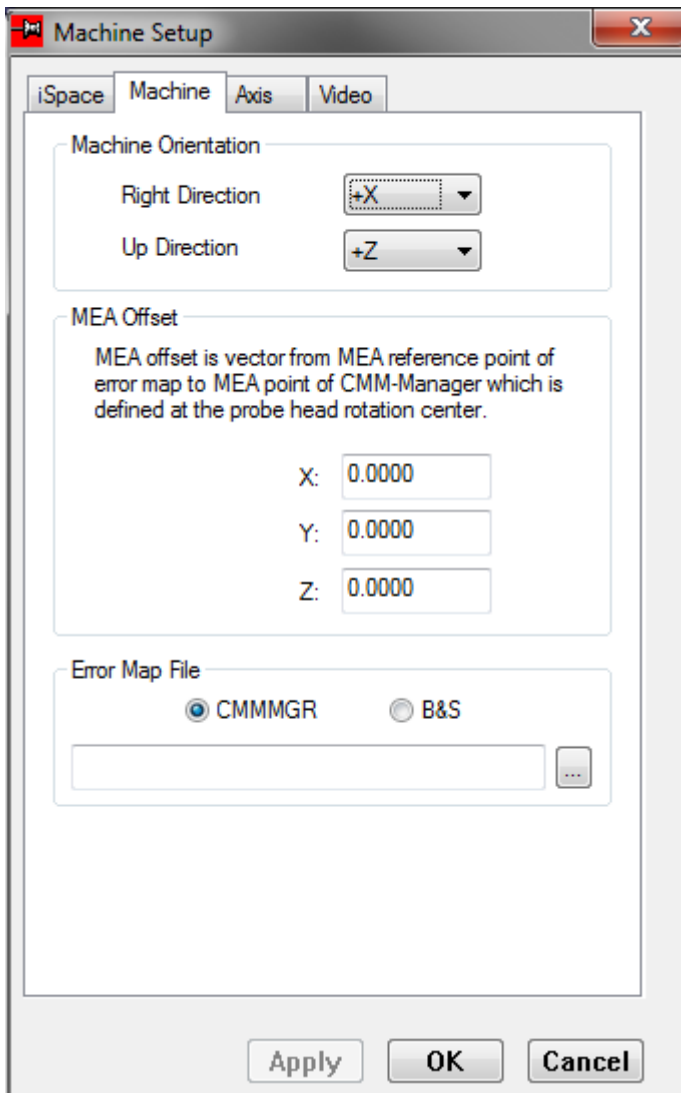
Communication Settings – Use default settings above if running Surveyor on the same PC as CMM-Manager. If Surveyor is running on a different PC, enter the IP address of the Surveyor PC. Use default port number.

Active Frame – Click on [**Select Frame**] button and select the desired iProbe frame to use. Click [**OK**].

Button Function – Configure button functions here.

Click the [**Apply**] button to save the changes made to this page.

5.3 Setup Machine Orientation



Right Direction - Set the direction to your right, in machine reference frame, when you stand facing the CMM.

Up Direction - Set the direction pointing up, in machine reference frame, when you stand facing the CMM.

MEA Offset - N/A.

Error Map File - N/A.

Click the [**Apply**] button to save the changes made to this page.

Click the [**OK**] button to accept the setup and exit the setup window.

6 Index

C

Copyright Notice • iii

F

File Locations • 1

I

Install CMM-Manager on Host PC • 3

Install Surveyor • 2

Installation Procedures • 2

S

Select Machine Setup • 3

Setup iSpace • 4

Setup Machine • 3

Setup Machine Orientation • 5

**NIKON METROLOGY NV**

Geldenaaksebaan 329
B-3001 Leuven, Belgium
phone: +32 16 74 01 00 fax: +32 16 74 01 03
sales.nm@nikon.com

NIKON METROLOGY EUROPE NV

phone: +32 16 74 01 01
sales.europe.nm@nikon.com

NIKON METROLOGY GMBH

phone: +49 6023 91733-0
sales.germany.nm@nikon.com

NIKON METROLOGY SARL

phone: +33 1 60 86 09 76
sales.france.nm@nikon.com

More offices and resellers at www.nikonmetrology.com

NIKON METROLOGY, INC.

phone: +1 810 2204360
sales.us.nm@nikon.com

NIKON METROLOGY UK LTD.

phone: +44 1332 811349
sales.uk.nm@nikon.com

NIKON CORPORATION

Shinagawa Intercity Tower C, 2-15-3, Konan, Minato-ku,
Tokyo 108-6290, Japan
phone: +81 3 6433 3701 fax: +81 3 6433 3784
www.nikon.com/products/industrial-metrology

NIKON INSTRUMENTS (SHANGHAI) CO. LTD.

phone: +86 21 5836 0050
phone: +86 10 5869 2255 (Beijing office)
phone: +86 20 3882 0550 (Guangzhou office)

NIKON SINGAPORE PTE. LTD.

phone: +65 6559 3618
nsg.industrial-sales@nikon.com

NIKON MALAYSIA SDN. BHD.

phone: +60 3 7809 3609

NIKON INSTRUMENTS KOREA CO. LTD.

phone: +82 2 2186 8400